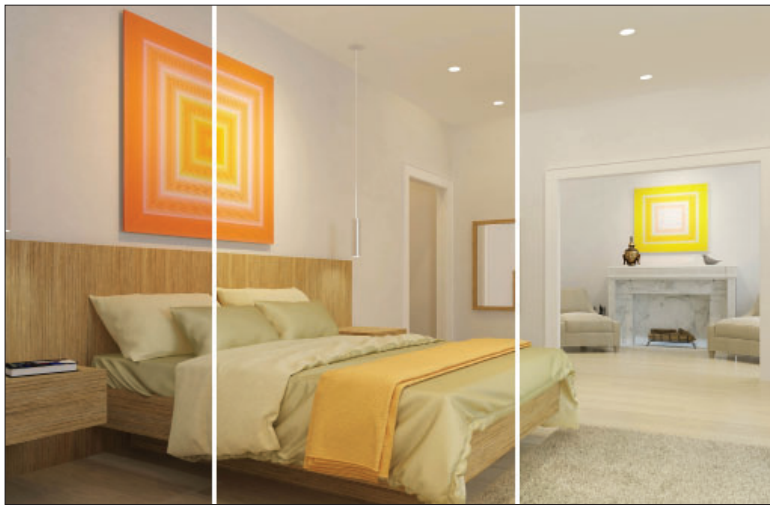


Recess 3" JA8 T24 Color Select Tunable White Downlight



Recess 3 inch JA8 T24 Color Select Tunable White Downlight

Now available with CEC T24 2016/2019 JA8 Compliant features for California-based projects. An elegant solution for a variety of applications. Featuring clean, architectural grade finishes and a smooth transition from cool white light to warm, the Recess 3 installs beautifully into all ceiling types, including drywall, stone, and wood and makes every space look its best.

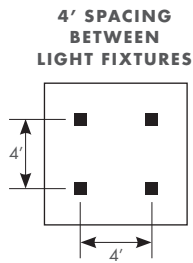
- **Ideal Applications:** Small to Medium-Scaled Spaces
- **Recommended for Ceiling Height:** 8' – 14'
- **Light Type:** Tunable White light from warm white (2700K) to cool white (4800K)



3" DOWNLIGHT PERFORMANCE DATA

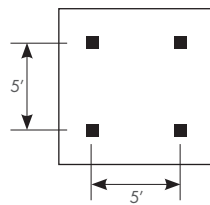
Color Select Tunable White						
Color Temperature	2700K	3000K	3500K	4000K	4500K	4800K
Delivered Lumens:	875	900	950	1000	1000	1025
Lumens Per Watt:	63	65	68	71	72	73
Source Lumens:	1000	1025	1075	1125	1150	1150
Wattage	15W					
CCT:	2700K to 4800K					
CRI:	90+					
Beamspread:	55°					
	Wide Beam / Straight Down					

Universal and Field Convertible -
Trim | Trimless | Millwork



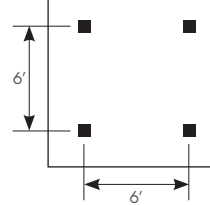
4' x 4' LAYOUT	CEILING HEIGHT			
Light levels at:	8'	10'	12'	14'
Light levels on Work Plane (2.5' AFF):	47	41	37	34
	(fc) foot candles			

5' SPACING BETWEEN LIGHT FIXTURES



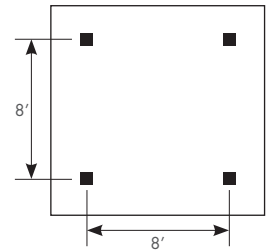
5' x 5' LAYOUT	CEILING HEIGHT			
Light levels at:	8'	10'	12'	14'
Light levels on Work Plane (2.5' AFF):	37	34	31	29
	(fc) foot candles			

6' SPACING BETWEEN LIGHT FIXTURES



6' x 6' LAYOUT	CEILING HEIGHT			
Light levels at:	8'	10'	12'	14'
Light levels on Work Plane (2.5' AFF):	27	26	25	24
	(fc) foot candles			

8' SPACING BETWEEN LIGHT FIXTURES



8' x 8' LAYOUT	CEILING HEIGHT			
Light levels at:	8'	10'	12'	14'
Light levels on Work Plane (2.5' AFF):	20	16	14	13
	(fc) foot candles			

Spacing Criteria = 0.86

Average light levels are provided in the tables above, for a range of lighting fixture layouts and ceiling heights. All illuminance values are reported in average footcandles (fc) and measured at the workplane, 30" above the floor.

For approximate light level recommendations, please refer to the IES guidelines shown below:

Workshop / Tools / Crafts: 40-100 fc
Board Games / Cards: 20-40 fc
Dining: 5-10 fc

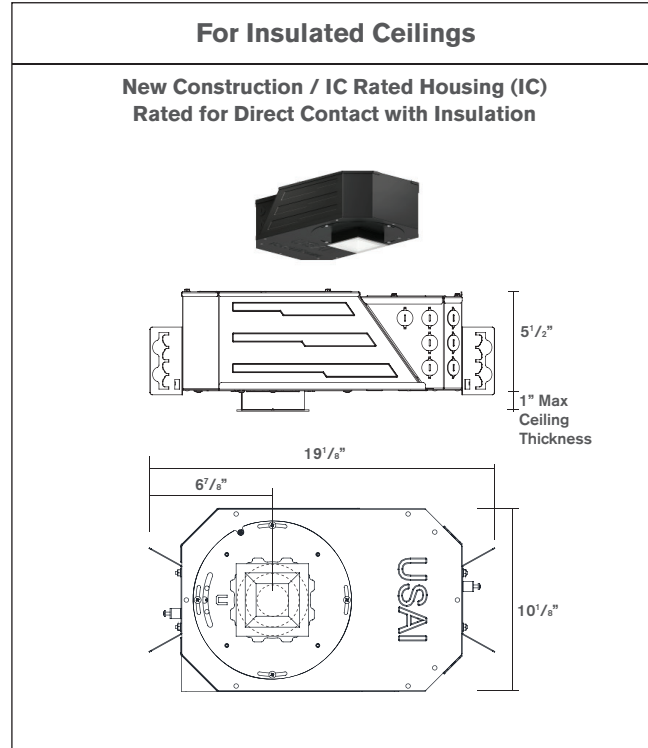
Kitchen: 30-50 fc
Computer: 15-30 fc
Media: 2-20 fc

Reading: 20-50 fc
Dressing: 10-30 fc
Corridors / Circulation: 3-5 fc

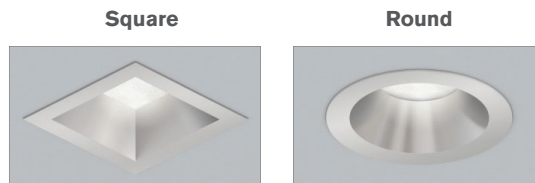
Recess 3" JA8 T24 Color Select Tunable White Downlight

Four Easy Steps to Specify

1 Select Housing Type



2 Select Shape



3 Select Trim Style For Ceiling Type



4 Select Trim Finish



Recess 3" JA8 T24 Color Select Tunable White Downlight



How to Specify

Manufacturer	Light Fixture Type			LED + Control		Options					Revision
USAI	3DL	D1	IC	TW2	IV15A			J	S		J8
USAI	Family	Function	Housing Type	LED Color	Wattage Driver	Shape	Style	Beam Spread	Lens	Finish	Version
USAI Lighting	3DL 3" Downlight, 15W	D1 Fixed Downlight	IC New Construction / IC Rated Housing / Airtight	TW2 Color Select Tunable White from 2700K to 4800K, continuously variable through 0-10V controls by others	IV15A Integral 0-10V Dimming Driver, to 1% 120V-277V, 15W	R Round S Square	F Trimmed P Trimless M Millwork	J 55° Beam	S Solite Textured Glass	WH White (provided standard) BL Black BZ Statuary Bronze GR Metalized Grey PR Primer AC Clear Matte Anodized AB Black Anodized	J8

RECESS 3 JA8 SPECIFICATIONS

FIELD REPLACEABLE LED LIGHT ENGINE

is serviceable through the aperture without tools. All USAI Lighting Color Select light engines feature industry leading color consistency.

FIELD REPLACEABLE DRIVER

Driver complies with IEEE62.41 surge protection. Multiple dimming driver options are available; some on-time delay may be experienced, depending on control system used.

HOUSING:

Fabricated of 20 ga. galvanized steel with thru wire J-box, 4 in 4 out at min. 90°C, #12 AWG thru branch circuit wiring. IC-rated housing is rated for direct contact with insulation of R-42 or less.

MOUNTING:

Butterfly brackets and adjustable nailer bars with integral nails provided. Nailer bars are extendible from 14" to 24" centers.

CEILING CUT OUT:

Round Trimmed with Overlap Flange: 3-5/8" Ø

Round Trimless with Plaster Frame: 4-3/16" Ø

Round Millwork: 3-9/16" Ø

Square Trimmed with Overlap Flange: 3-1/2" x 3-1/2"

Square Trimless with Plaster Frame: 4-1/16" x 4-1/16"

Square Millwork: 3-3/8" x 3-3/8"

LISTINGS:

Dry/Damp/Wet location rated with WH, BL, BZ, GR and PR trims only. Dry/Damp only with AC and AB trims. NRTL/CSA-US tested to UL standards. IBEW union made. CEC / Title 24 2016 JA8 Compliant, see CEC website for exact models included.



NOTES:

- Not for use in corrosive environment.
- Use of pressure washer voids warranty.

PHOTOMETRICS:

Consult factory or website for IES files. Tested in accordance with IESNA LM79.