

Recess 3" JA8 T24 Classic White Adjustable



Photograph: Jess Ross Photography (non-transferable)

Recess 3 inch JA8 T24 Classic White Adjustable

Now available with CEC T24 2016/2019 JA8 Compliant features for California-based projects, the Recess 3 installs beautifully into all ceiling types, including drywall, stone, and wood and makes every space look its best.

- **Ideal Applications:** Small to Medium-Scaled Spaces
- **Recommended for Ceiling Height:** 8' – 14'
- **Light Type:** Consistent warm or neutral white, soft ambient light



3" ADJUSTABLE PERFORMANCE DATA

Shape	Classic White	
	Round	Square
Delivered Lumens:	1000	975
Lumens Per Watt:	73	72
Source Lumens:	1600	
Wattage	15W	
CCT:	2700K or 3000K	
CRI:	90+	
Beamspread:	25°	
	Narrow Beam / Adjustable	

Round Trims

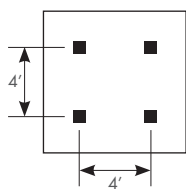


Square Trims



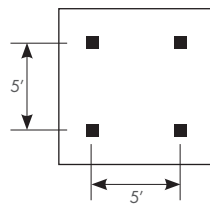
Universal and Field Convertible - Trim | Trimless | Millwork

4' SPACING BETWEEN LIGHT FIXTURES



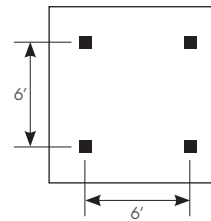
4' x 4' LAYOUT	CEILING HEIGHT			
Light levels at:	8'	10'	12'	14'
Light levels on Work Plane (2.5' AFF):	60	55	51	47
	(fc) foot candles			

5' SPACING BETWEEN LIGHT FIXTURES



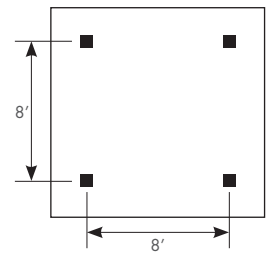
5' x 5' LAYOUT	CEILING HEIGHT			
Light levels at:	8'	10'	12'	14'
Light levels on Work Plane (2.5' AFF):	51	45	41	38
	(fc) foot candles			

6' SPACING BETWEEN LIGHT FIXTURES



6' x 6' LAYOUT	CEILING HEIGHT			
Light levels at:	8'	10'	12'	14'
Light levels on Work Plane (2.5' AFF):	30	30	30	29
	(fc) foot candles			

8' SPACING BETWEEN LIGHT FIXTURES



8' x 8' LAYOUT	CEILING HEIGHT			
Light levels at:	8'	10'	12'	14'
Light levels on Work Plane (2.5' AFF):	26	23	21	19
	(fc) foot candles			

Spacing Criteria = 0.36

Average light levels are provided in the tables above, for a range of lighting fixture layouts and ceiling heights. All illuminance values are reported in average footcandles (fc) and measured at the workplane, 30" above the floor.

For approximate light level recommendations, please refer to the IES guidelines shown below:

Workshop / Tools / Crafts: 40-100 fc
Board Games / Cards: 20-40 fc
Dining: 5-10 fc

Kitchen: 30-50 fc
Computer: 15-30 fc
Media: 2-20 fc

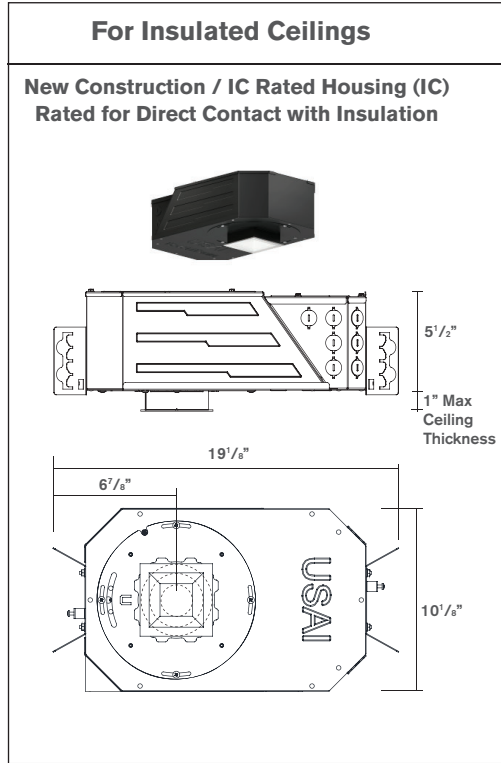
Reading: 20-50 fc
Dressing: 10-30 fc
Corridors / Circulation: 3-5 fc

Recess 3" JA8 T24 Classic White Adjustable



Six Easy Steps to Specify

1 Select Housing Type



2 Select White Light

Warm White (C27)



2700 Kelvin
Similar to Incandescent

Neutral White (C30)



3000 Kelvin
Similar to Halogen

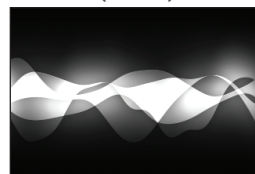
3 Select Dimming Control Type - Smooth Dimming to 1% Standard

0-10V Low Voltage Dimming (IV15A)



Compatible with 0-10V Controls

Phased Line Voltage Dimming (IP15A)

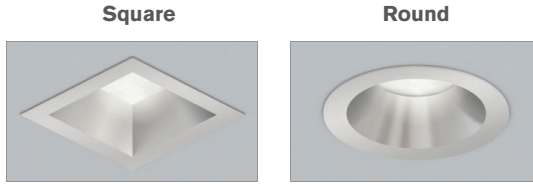


Compatible with Forward and Reverse Phase Dimmers

Recess 3" JA8 T24 Classic White Adjustable



4 Select Shape



5 Select Trim Style For Ceiling Type



6 Select Trim Finish



How to Specify

Manufacturer	Light Fixture Type			LED + Control				Options			Revision
USAI	3DL	A1	IC					D	S		J8
USAI	Family	Function	Housing Type	LED Color	Wattage Driver	Shape	Style	Beam Spread	Lens	Finish	Version
USAI Lighting	3DL 3" Downlight, 15W	A1 Adjustable Tilt and Aim Downlight	IC New Construction / IC Rated Housing / Airtight	C27 Warm White 2700K High 90+ CRI C30 Neutral White 3000K High 90+ CRI	IP15A Integral Phase Dimming Driver, to 1% 120V only, 15W IV15A Integral 0-10V Dimming Driver, to 1% 120V-277V, 15W	R Round S Square	F Trimmed P Trimless M Millwork	D 25° Beam	S Solite Textured Glass (provided standard)	WH White (provided standard) BL Black BZ Statuary Bronze GR Metalized Grey PR Primer AC Clear Matte Anodized AB Black Anodized	J8

Recess 3" JA8 T24 Classic White Adjustable

RECESS 3 SPECIFICATIONS

FIELD REPLACEABLE LED LIGHT ENGINE

is serviceable through the aperture without tools. All USAI Lighting Classic White light engines feature industry leading color consistency within a 2-Step MacAdam's ellipse.

FIELD REPLACEABLE DRIVER

Driver complies with IEEE62.41 surge protection. Multiple dimming driver options are available; some on-time delay may be experienced, depending on control system used.

HOUSING:

Fabricated of 20 ga. galvanized steel with thru wire J-box, 4 in 4 out at min. 90°C, #12 AWG thru branch circuit wiring. IC-rated housings for use with 15W light engines only are rated for direct contact with insulation of R-42 or less.

MOUNTING:

Butterfly brackets and adjustable nailer bars with integral nails provided. Nailer bars are extendible from 14" to 24" centers.

CEILING CUT OUT:

Round: 3-1/2" Ø

Square: 3-1/2" x 3-1/2"

LISTINGS:

Dry/Damp. Wet location option available with WH, BL, BZ, GR and PR trims only. CEC / Title 24 2016 JA8 Compliant, see CEC website for exact models included. NRTL/CSA-US tested to UL standards. IBEW union made.



NOTES:

- Not for use in corrosive environment.
- Use of pressure washer voids warranty.

PHOTOMETRICS:

Consult factory or website for IES files. Tested in accordance with IESNA LM79.