

Savant App Music Service User Guide

Document Number: 009-2031-08

Document Date: January 2024

Document Supports: Savant App Version 10.5 and Higher



This guide describes how to navigate the Savant Music service in the Savant App.

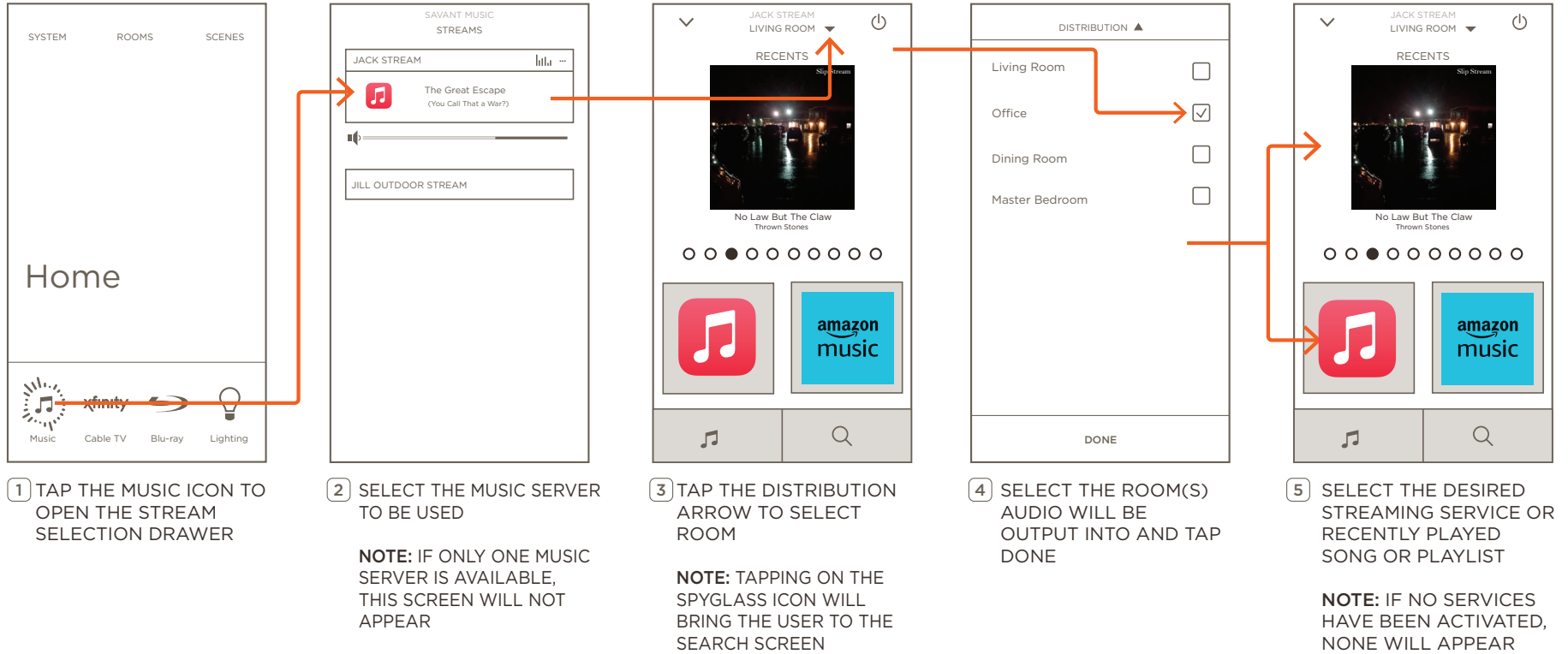
Contents

To access links to the topics within this document, click the corresponding entry in the table of contents below.

- 1. Music Service Selection 3
- 2. Adding a Streaming Service 4
 - 2.1. Service Account Information 4
 - 2.2. Configured Account 5
- 3. Now Playing 6
 - 3.1. Service Account Information 7
- 4. Queue 8
- 5. Playlists 9
 - 5.1. Create New Playlist 10
- 6. Favorites 11
- 7. Adding Playlists and Favorites to a Scene 12
- 8. Recents 13
- 9. Search 14
- 10. Settings 15
- Appendix A: Streaming Service Information..... 16
 - Spotify Connect 16
 - AirPlay..... 17
 - Default Rooms 18
 - Spotify Connect Endpoints..... 19
 - Plex..... 20
 - Plex Local Servers..... 21

1. Music Service Selection

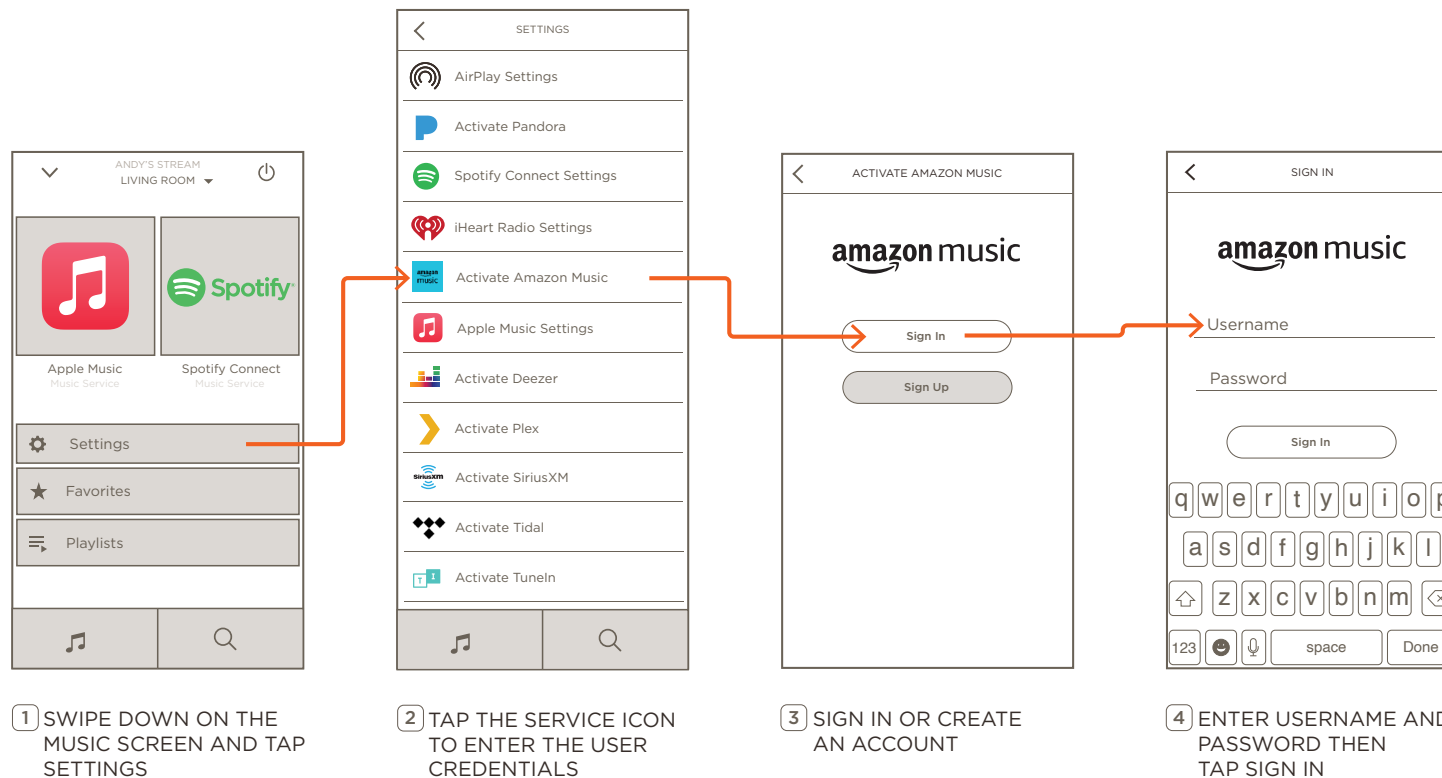
Tap the Music icon from the Savant App Home screen to turn on the Music service.



 **TIP:** Tap, hold and drag-down on the current room to go back to Home or access another room.

2. Adding a Streaming Service

The example below shows how to add the Deezer music streaming service. The basic process for all streaming services is similar.



2.1. Service Account Information

This is a basic list of what is needed for each supported streaming service. For more information see [Appendix A: Streaming Service Information](#).

Amazon Music: Account login uses email and password. **Amazon Prime** and **Amazon Music Unlimited** accounts are supported.

Apple Music: Account login uses email address and password.

Deezer: Account login uses email and password. **Deezer Premium** and **HiFi** accounts are supported.

iHeartRadio: Account login uses email address and password.

Pandora: Account login uses email address and password.

Plex: Account login uses user name and password. Server also must be selected in **Plex Settings**.

SiriusXM: Account login uses email address and password.

SoundMachine: Account login uses email address and password.

TuneIn: No account login required.

NOTE: Streaming services may require paid accounts. This requirement may be changed at any time by the streaming service provider without notice.

2.2. Configured Account

Once an account for a streaming service has been added, the account can be configured within the stream-specific settings menu. Streaming services that require accounts can be added, disabled, or deleted. The user may switch between multiple added accounts.

Add Account: Add an additional account to the Savant system.

Sign Out: Log out of that account for all streaming servers within the Savant Home.

Disable: Disable the specific account for the specific streaming server.

3. Now Playing

The Now Playing screen can be accessed by swiping up on the Now Playing Ribbon at the bottom of the screen after pressing play on a song.

NOTE: The Savant App Music Service will automatically power off if nothing is playing after a 90-minute period.



A **Service Name** - Name of the service.

B **Room** - The room that the service is being controlled in.

C **Close** - Returns to the last active screen.

D **Album Art** - Cover art for the album is displayed.

E **Time Elapsed** - Displays the amount of time elapsed over song length.

Service Controls - Basic control of the active stream.

Repeat: Allow songs in the active queue to replay once complete. The icon will change color to orange to show the Repeat feature is on. Tap twice to repeat the currently playing song until repeat is toggled off.

Back: Returns to the beginning of the song or if at the beginning of a song will go to the previous song.

F **Play/Pause:** Starts or stops the current song playing.

Forward: Skips to the next song in the active queue.

Shuffle: Plays all songs in the active queue in a random order. The icon will change color to orange to show the Shuffle feature is on.

NOTE: The Now Playing screen controls are dynamic and shown upon the music providers capabilities and features. For example, not all live radio stations allow songs to be skipped.

G **Power** - Powers off the service.

Progress Bar - Visual representation of time elapsed in the current song.

H **NOTE:** Some streaming services will not allow the user to scrub through a song with the progress bar.

I **Options** - Opens the Options menu. For information on Options, see [Playlists](#).

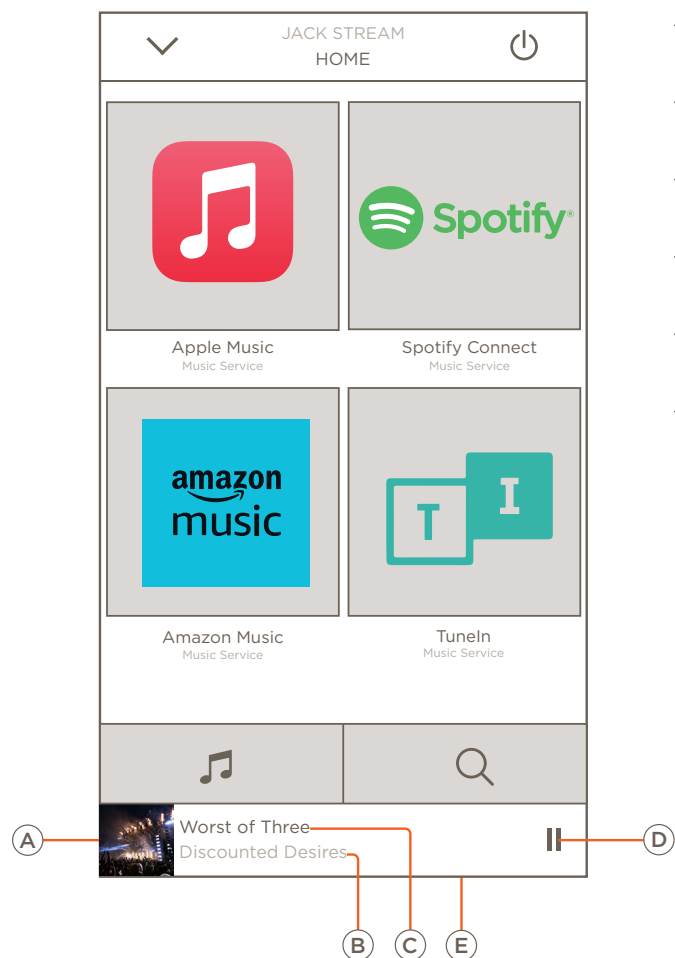
J **Song Info** - Displays the track or station info, as well as streaming service used.

K **Volume Controls** - Increase or decrease volume of the zone. Mute button will toggle sound on and off.

L **Queue** - Tap or swipe up to access the Queue page. For information, see [Queue](#).

3.1. Now Playing Bar

Once music is playing, all screens inside the Music service will display a ribbon at the bottom of the screen displaying the actively playing song.

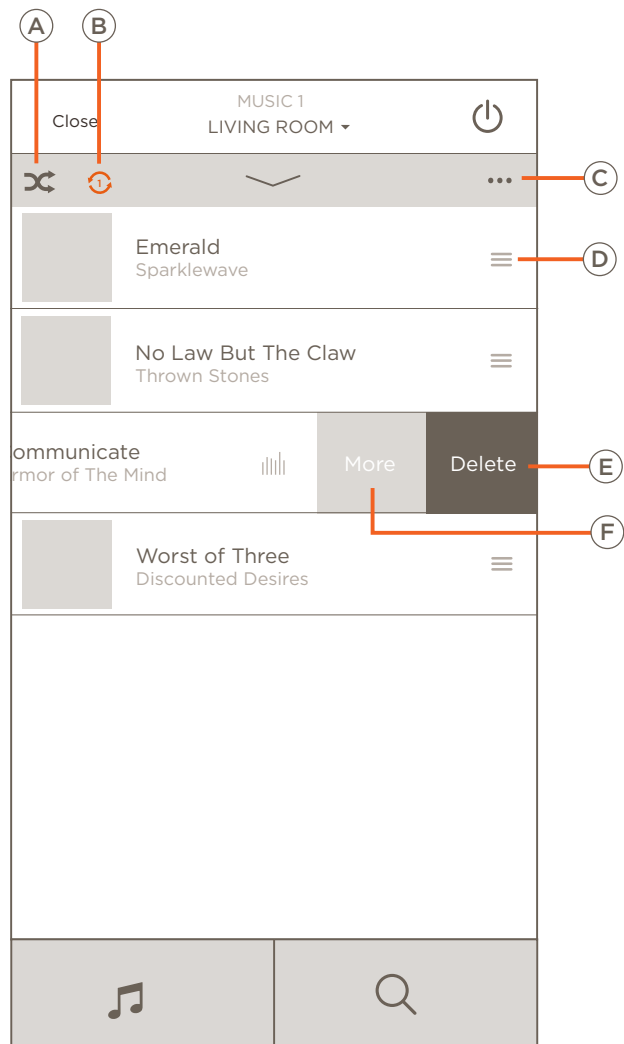


- (A) **Album Art:** Album art of the song playing.
- (B) **Artist Name:** Artist name of the song playing.
- (C) **Song Title:** Song title of the song playing.
- (D) **Play/Pause:** Button to play or pause the active song in the queue.
- (E) **Now Playing Bar:** Tap or tap and drag up to reveal the full Now Playing screen

4. Queue

The Queue screen can be accessed by tapping or swiping up on the Queue Ribbon at the bottom of the Now Playing screen.

NOTE: The queue may be empty or uneditable whilst playing a radio station.



- A Random** - Plays songs in Queue in a random order.
- B Queue** - Displays how many songs in the Queue.
- C Ellipses (...)** - Options to Save Queue to Playlist, Clear Queue and Cancel.
- D Menu** - Opens the More and Delete options.
- E Delete** - Deletes the selected song from the current Queue.
- F More** - Options to Save Queue to Playlist, Clear Queue and Cancel.

5. Playlists

Tap Playlists from the Music Selection screen to bring up a list of saved playlists. Tap the name of the playlist to open the Playlist screen.

The screenshot shows the 'PASSION' playlist interface. At the top is a back arrow (A) and a menu icon (H). Below is the playlist name 'PASSION' (B) and a play button (C) and a shuffle button (D). A list of songs follows: 'Anger Is A Very Effective...' by Skulls (E), 'Altruism' by Too Close To The Floor (F), and 'Moving Sideways' by DJ BANX. Each song has a three-dot menu icon (G) to its right.

A Back - Returns to the last screen.

B Playlist Name - Displays the name of the selected playlist.

C Play - Press to play the first song on the playlist.

D Shuffle - Plays the playlist in a randomized order.

E Song Information - Displays song title and artist.

F Playlist Art - Displays album artwork or streaming service thumbnail from the playlist.

G Options - Tap the ... next to a song to reveal the options window for that song.

H Actions - Tap the ... in the top right to reveal the actions window for the playlist.

This screenshot shows the options menu for the song 'Anger Is A Very Effective...' by Skulls. It includes options like 'Play All Now', 'Play All Next', 'Play All At End', 'Save As Favorite', 'Save To Playlist', 'Add To Home', and 'Cancel'.

Play All Now: Replaces queue and plays now.

Play All Next: Adds the playlist songs to the queue after the current song.

Play All At End: Adds the playlist songs to the song queue at the end of the current list of songs.

Save As Favorite: Adds the playlist to the Favorites.

Save To Playlist: Adds the contents of the playlist to a new or existing Savant or specific streaming service playlist.

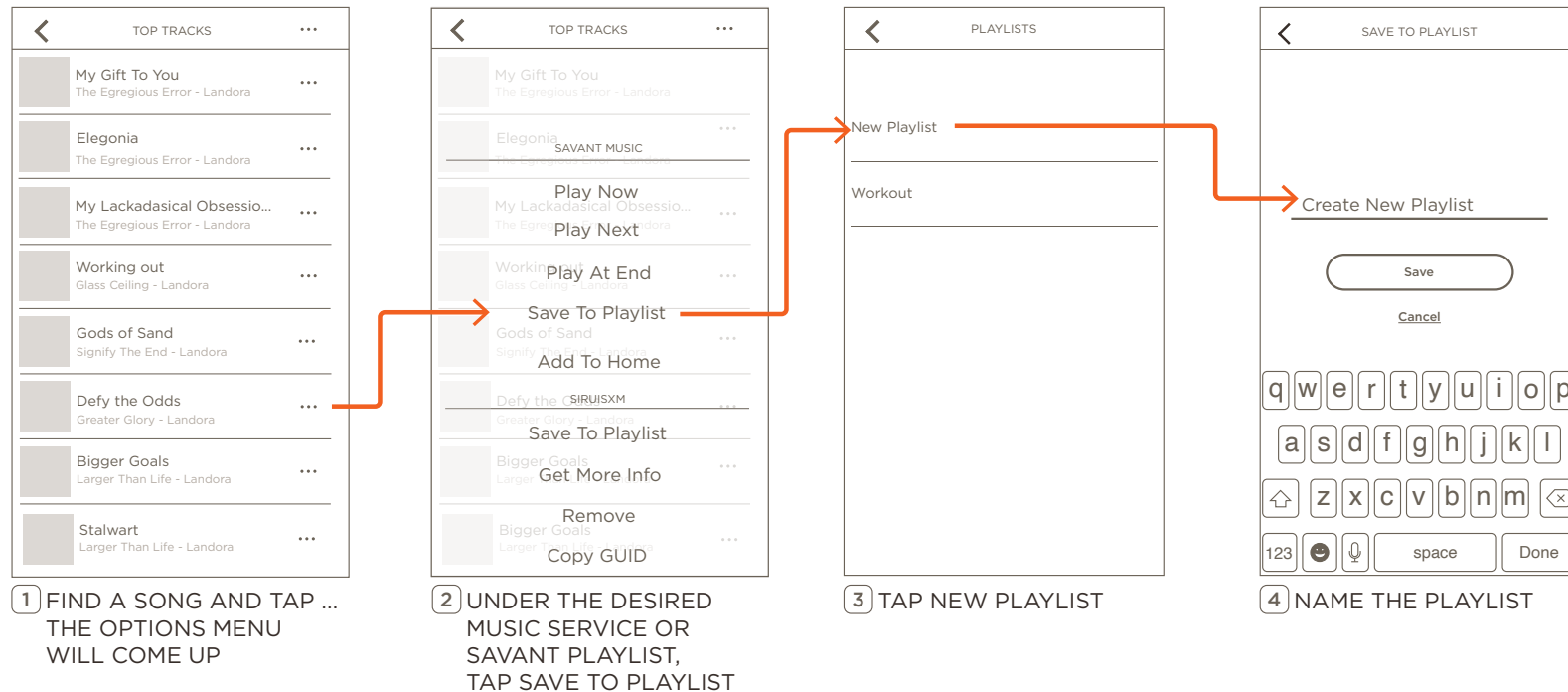
Add To Home: Adds the song to the Home screen of the Music Service or individual streaming service.

5.1. Create a New Playlist

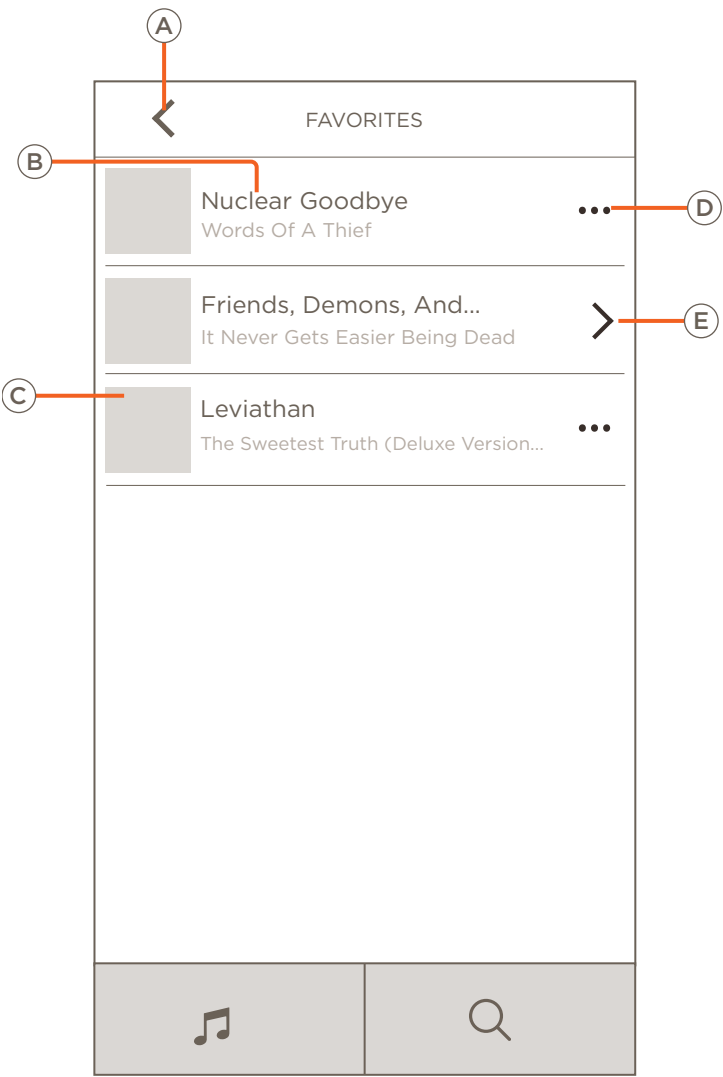
Savant Playlists can contain music from multiple streaming services, while stream-specific playlists contain only music available within that streaming service. This section details the steps to create a new Savant Playlist. A song can be added from any of the locations that songs are listed. This example uses the Top Tracks Screen. Once a song has been found, do the following:

NOTE:

- Songs from Spotify and Pandora cannot be added to Savant Playlists.
- Pandora playlists are not accessible using Savant Music Service.



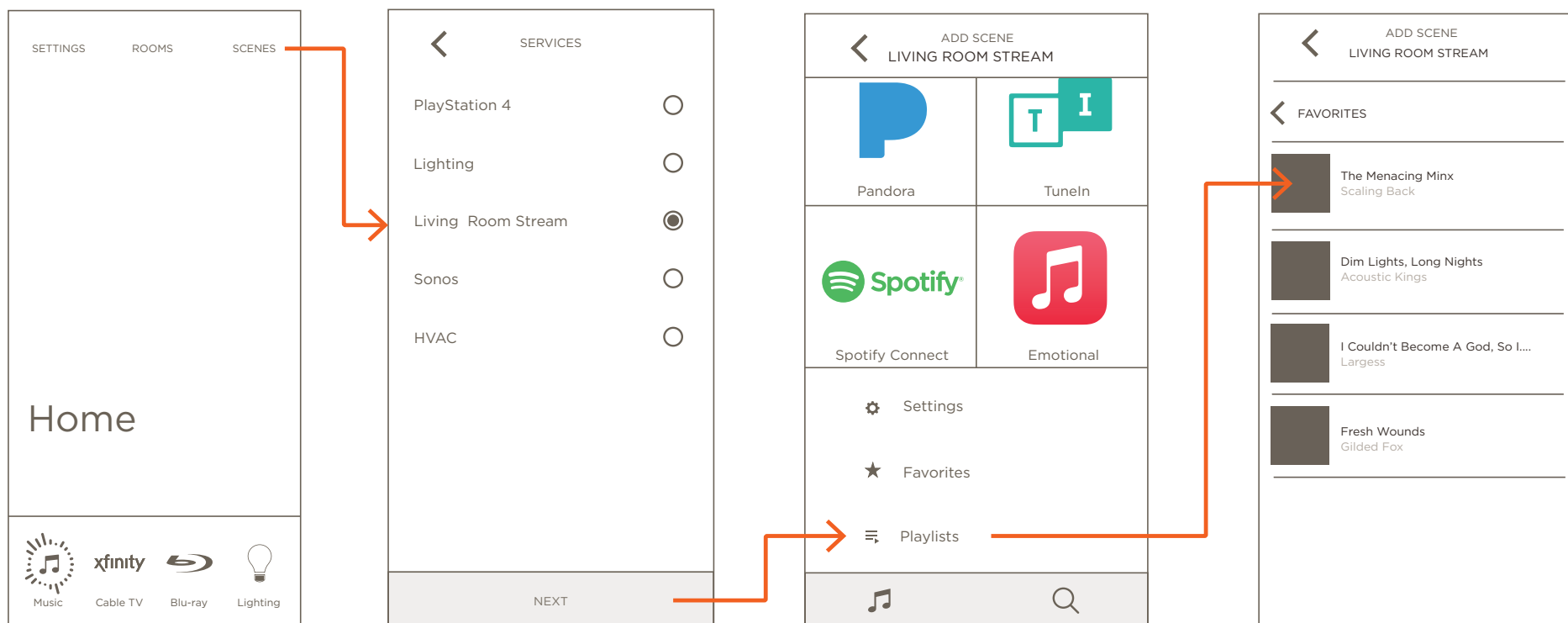
6. Favorites



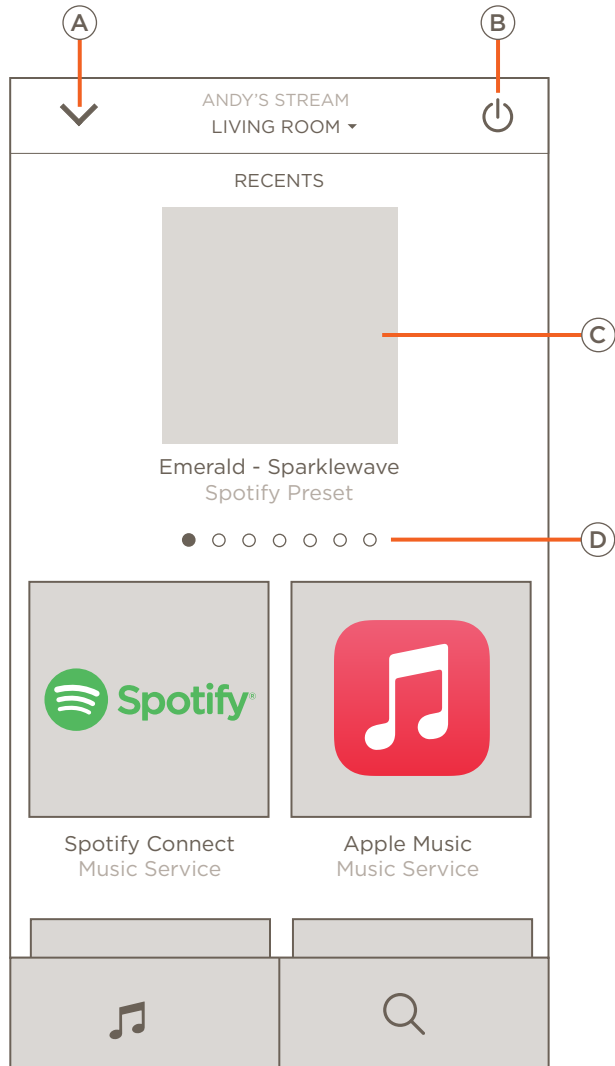
- A** Back - Returns to the last screen.
- B** Song Name - Title of the song.
- C** Album Art - Visual description of the album.
- D** Options - Tap the ... icon for options detailed in the [Playlist](#) section.
- E** Album Details - Tap to view individual songs from an album.

NOTE: Savant Music Favorites can be created even while Spotify Connect is in use to quickly recall later without opening the Spotify App.

7. Adding Playlists and Favorites to a Scene



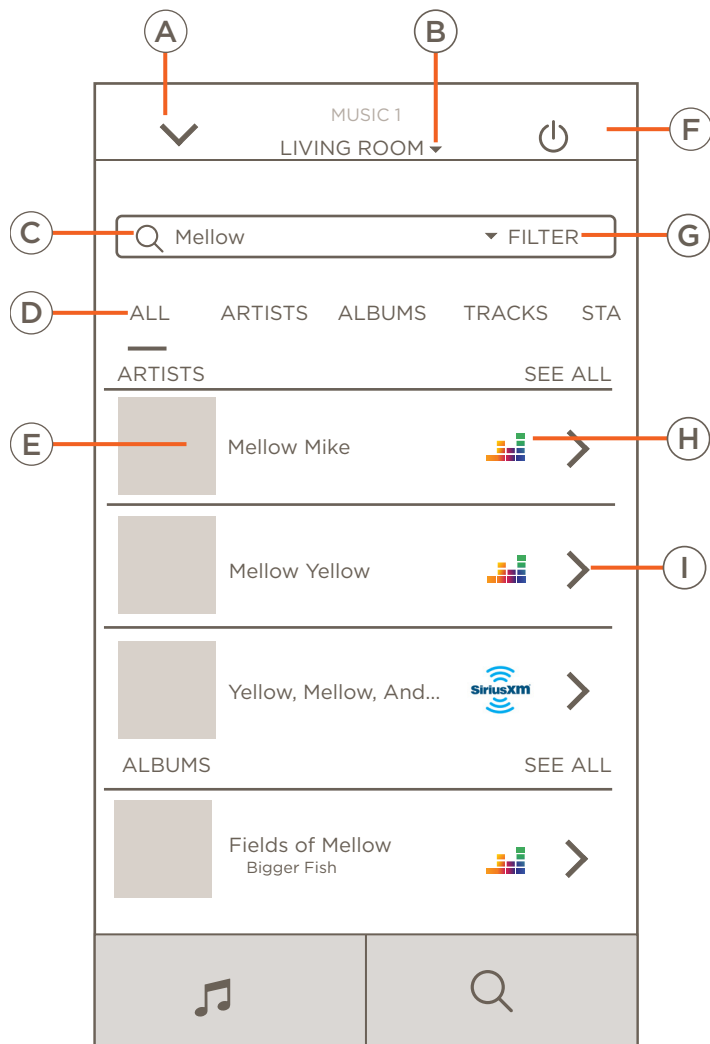
8. Recents



- (A) Exits** - Exits the music service and returns to the home or room screen of the Savant app.
- (B) Power** - Powers off the Music service.
- (C) Album Art** - Visual description of the album, playlist or service used.
- (D) Recents** - Swipe to view the most recently played album, playlist or favorite.

9. Search

Tap the Spyglass icon on the bottom right-hand corner of the Music Selection screen to access the Search screen. The following is a description of all fields and their functionality.



A **Exit** - Exits the music service and returns to the home or room screen of the Savant app.

B **Room** - Tap to distribute audio stream to Home.

C **Search Text** - Enter search term.

D **Search by** - Defaults to search for all. Tap individual fields to narrow search, and swipe left to view different search conditions.
NOTE: The Spotify App must be used to search Spotify.

E **Artist Info** - Artist picture and information.

F **Power** - Powers off the Music service.

G **Filter** - Filter results by streaming service.

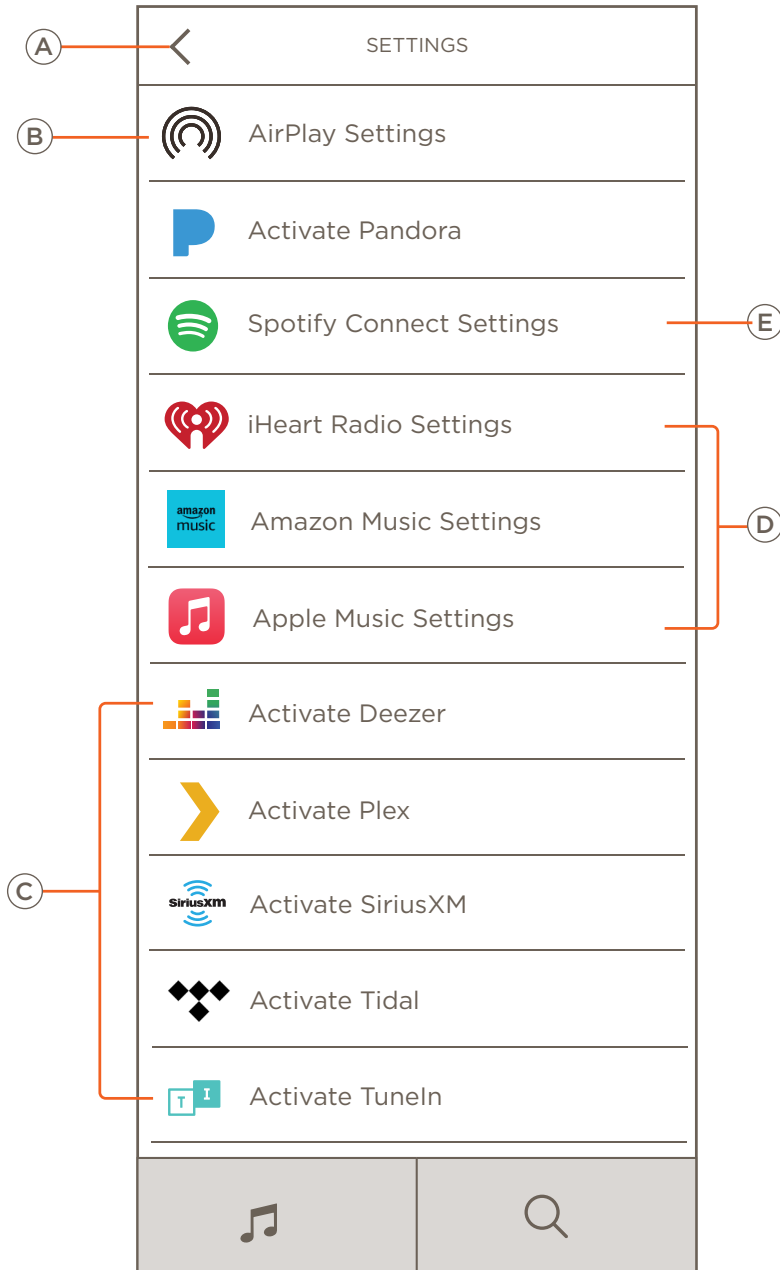
H **Streaming Service** - Service the song will be streamed from.

I **Subitems >** - Tap to view items of selected Artist, Album, Track, Station, Playlist or Podcast.

Options ... - Individual songs that fit the search criteria will display the Options menu. Tap to Open the Options menu.

NOTE: Recent Searches will be displayed first if any term has been searched beforehand. Tap the X icon next to any recently searched music to remove the media from Recent Searches, or tap **CLEAR** to remove all recent searches.

10. Settings



A **Back** – Returns to the last screen.

B **AirPlay Settings** - Rename, enable or disable AirPlay. Set Unable or Fixed Volume input setting for audio stream. Choose to control volume on Apple Device or by Savant.

NOTE: Must be activated before AirPlay and AirPlay settings are available.

C Streaming services available to be added.

D **Configured Streaming Services** - Displays settings available for previously activated music streaming services.

E **Spotify Connect Settings** - Rename how the device appears in the Spotify App. Enable or Disable Spotify Connect.

Appendix A: Streaming Service Information

Spotify Connect

Use your phone, tablet or computer as a remote control for Spotify. Go to spotify.com/connect to learn how.

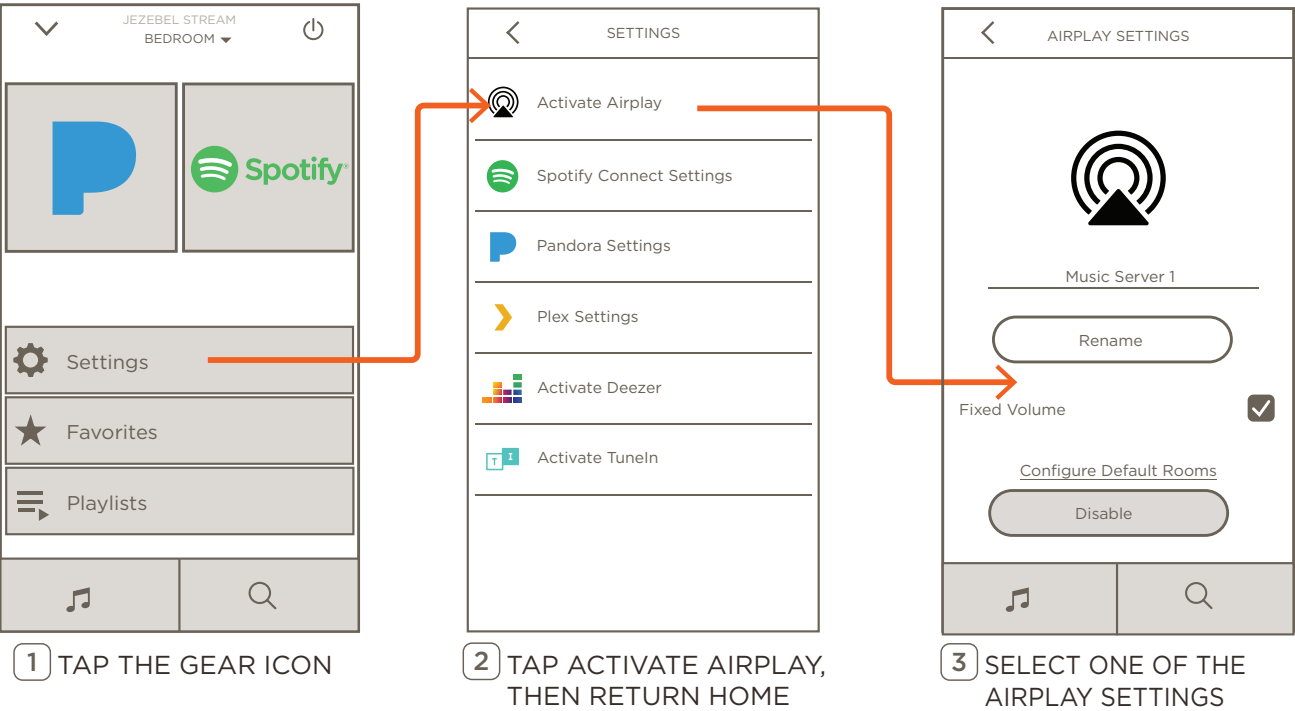
IMPORTANT NOTES:

- Tapping on the Spotify icon or album art in the Savant App will automatically open the Spotify App.
- For information about **Configuring Default Rooms** for Spotify, see the [Default Rooms](#) section.
- Spotify Free and Spotify Premium are both supported.
- Opening the Spotify Tile is not required to start listening to Spotify.
- For information about creating Spotify Connect Endpoints, see the [Spotify Connect Endpoints](#) section.
- Spotify Connect can be disabled by navigating to the Spotify Connect Settings and selecting Disable.

AirPlay

To use the AirPlay feature, power on the Savant Music service and leave it at the Service Selection screen. Control and play audio from the device that is connected to Savant Music Server via AirPlay.

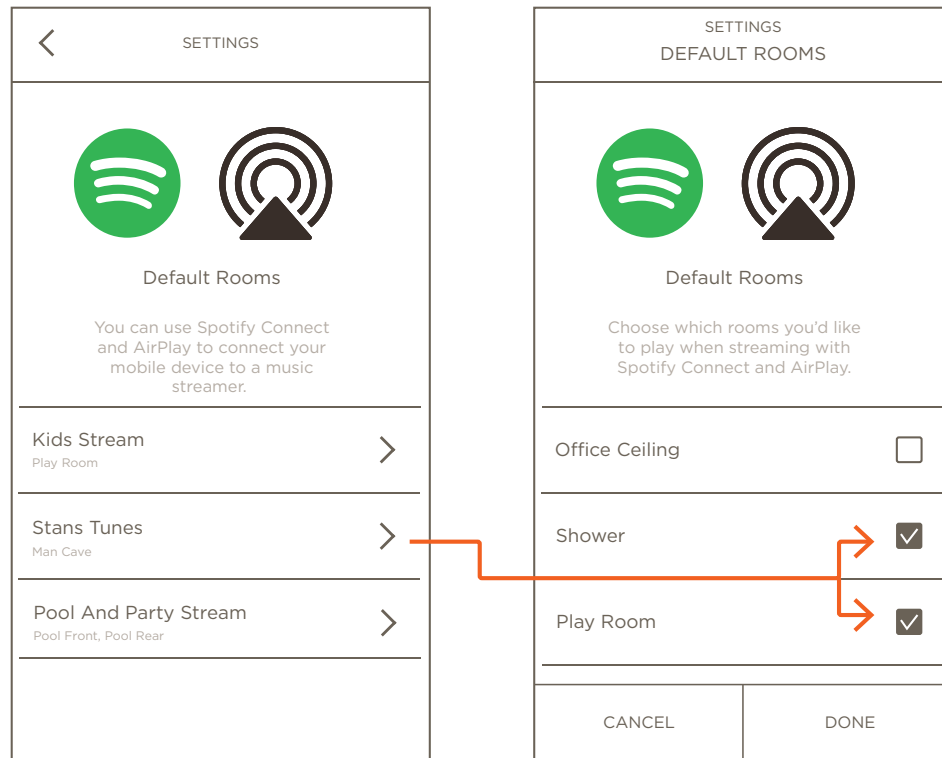
Navigate to AirPlay Settings



Rename	Tap to edit the name used for AirPlay from supported devices.
Fixed Volume	Tap to toggle between fixed and variable volume for the AirPlay server.
Configure Default Rooms	Tap to choose which rooms and at what volume audio will be played at automatically when using AirPlay or Spotify Connect.
Disable/Enable AirPlay Server	Tap to toggle AirPlay on and off.

Default Rooms

Both Spotify Connect and AirPlay can take advantage of using **Default Rooms**. Rooms that configured as Default Rooms will automatically turn on when either AirPlay or a Spotify Connect starts on Savant Music. Once configured, this feature allows for playback through Savant Music without having to power on the music service in the Savant App. Navigate in the Savant App from **Settings > Audio Settings > Default Rooms** to configure.



Use your phone, tablet or computer as a remote control for Spotify. Go to spotify.com/connect to learn how.

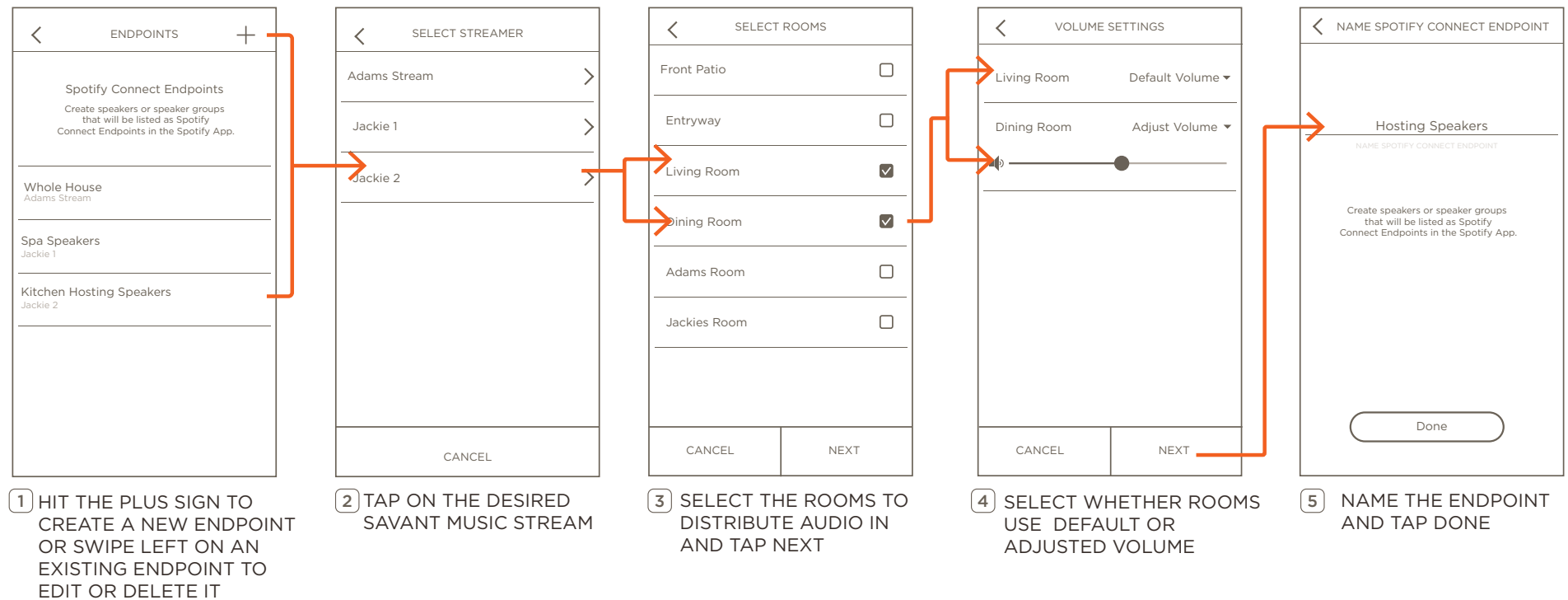
1 TAP THE SAVANT MUSIC STREAM TO BE CONFIGURED

2 CHECK THE ROOMS THAT AUDIO WILL BE AUTOMATICALLY DISTRIBUTED TO AND TAP DONE

Spotify Connect Endpoints

Spotify Connect Endpoints can be configured to show individual or groupings of Savant Speakers within the Spotify app. To configure Spotify Connect Endpoints, navigate from the Home Screen to **Settings > Audio Settings > Spotify Connect Endpoints**. Once configured, Spotify Connect Endpoints allows any speaker or group connected to the streamer to be a playable Spotify Connect Endpoint. Alternatively, Spotify Connect Endpoints can be configured by navigating to **Savant Music Service > Settings > Spotify Settings**.

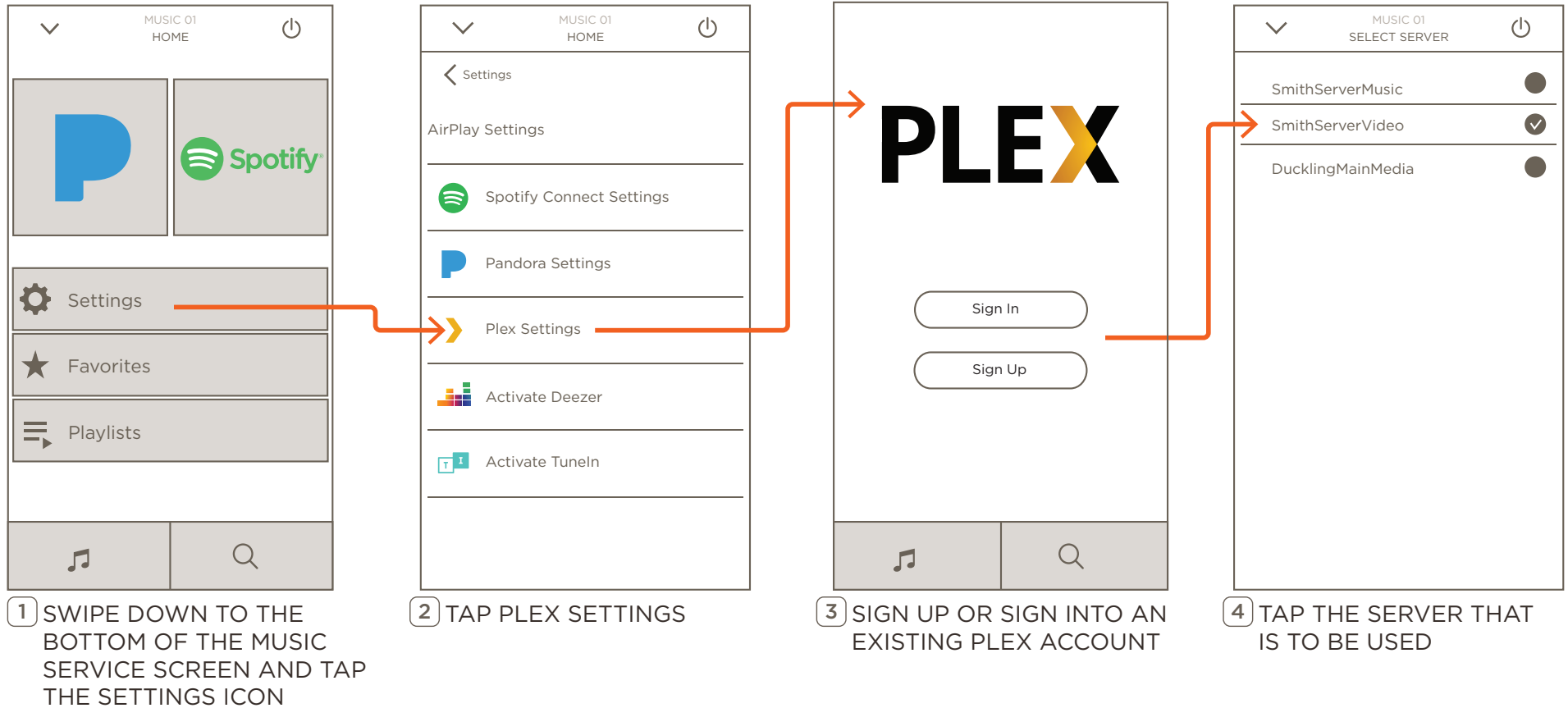
Use your phone, tablet or computer as a remote control for Spotify. Go to spotify.com/connect to learn how.



⚠ IMPORTANT NOTE: The last user to access a Savant audio endpoint via Spotify Connect will retain remote access to that endpoint indefinitely, or until accessed by another user.

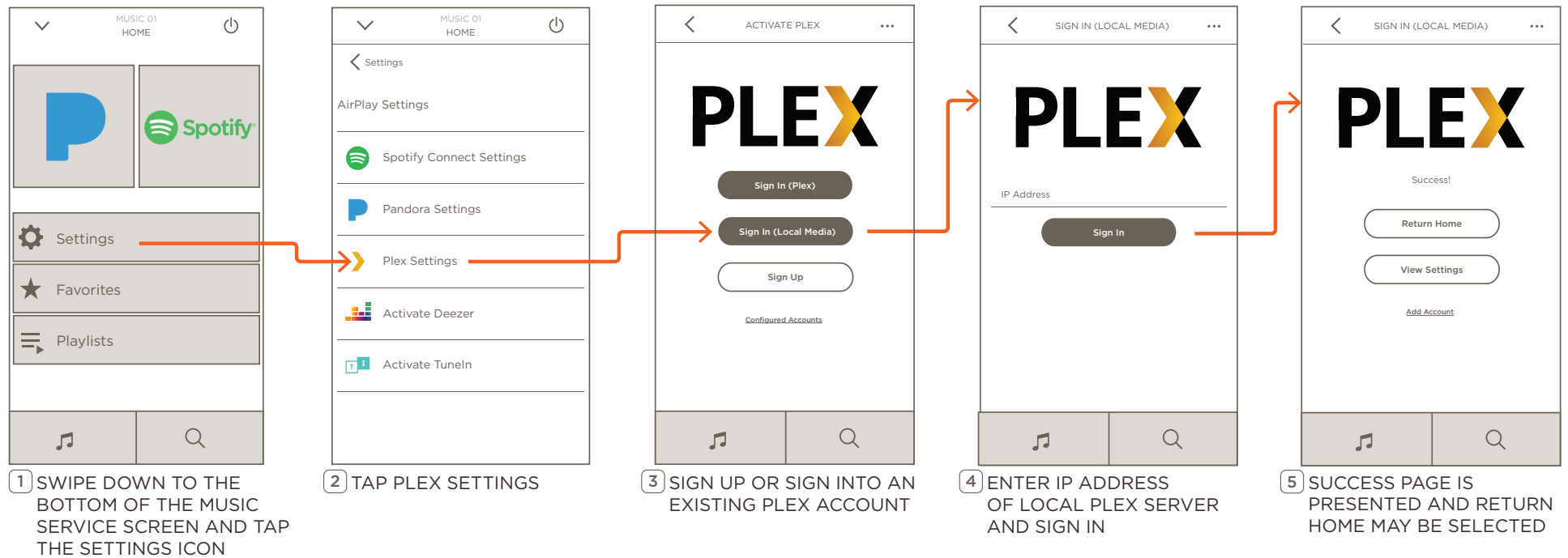
Plex

After the login credentials have been entered into the Savant App, a Plex server will need to be selected.



Plex Local Servers

For first time sign in to a Plex Server installed locally, use the following process.



NOTE: Multiple Plex servers can be added. From the Savant App Music screen seen on step 1, navigate to **Settings > Plex Settings > Select Server**.

Important Notice

Disclaimer

Savant Systems, Inc. reserves the right to change product specifications without notice, therefore, the information presented herein shall not be construed as a commitment or warranty.

Savant Systems, Inc. shall not be liable for any technical or editorial errors or omissions contained herein or for incidental or consequential damages resulting from the performance, furnishing, reliance on, or use of this material.

Patents

Certain equipment and software described in this document is protected by issued and pending U.S. and foreign patents.

All products and services are trademarks or registered trademarks of their respective manufacturer.

Copyright

This document contains confidential and proprietary information protected by copyright. All rights reserved. Copying or other reproduction of all or parts of this document is prohibited without the permission of Savant Systems.

Trademarks

© 2024 Savant Systems, Inc. All rights reserved. Savant, Savant App, Truelmage, Savant Host, Now You Can, RacePoint Blueprint, Single App Home, TrueCommand, TrueControl, and the Savant logo are trademarks of Savant Systems, Inc.

AirPlay, Apple, AirPort Express, AirPort Extreme, Apple TV, Apple Remote Desktop, FireWire, iMac, iTunes, iPad, iPad mini, iPad Air, iPhone, MacBook, Mac and macOS are trademarks or trade names of Apple Inc. iOS is a trademark of Cisco®. Android, Google, Google Play, and other Google marks are trademarks of Google, Inc. Wi-Fi is a registered trademark of the Wi-Fi Alliance®. HDMI® is a trademark of HDMI Licensing, LLC. MOTU® is a registered trademark of Mark of the Unicorn, Inc. Luxul is a registered trademark of Luxul Wireless. NETGEAR®, the NETGEAR Logo and ProSAFE are trademarks of NETGEAR, Inc. Extreme™ is a trademark of Extreme Networks, Inc.

The Spotify Software is subject to third party licenses found here: <https://www.spotify.com/connect/third-party-licenses>.

All other brand names, product names, and trademarks are the property of their respective owners.

Technical and Sales Support

Savant Systems, Inc is dedicated to providing prompt and effective support in a timely and efficient manner.

- To contact Savant Support, access the **Savant Customer Community** and enter a support Case ticket.
- To contact Savant Sales, visit Savant.com and select Contact Us to locate a local sales representative in your area.