



Desktop Charging Dock for iOS Devices Quick Reference Guide

Box Contents

- (1) Desktop Wired Charging Dock for iOS devices (DCD-A00L)
- (1) Power Supply 12V DC 2A 24W with International Clips
- (1) Quick Reference Guide (this document)

Specifications

Environmental

Temperature	32° to 104° F (0° to 40° C)
Humidity	10% to 80% Relative Humidity (non-condensing)

Dimensions and Weight

Height	3.73 in (9.4 cm)
Width	4.79 in (12.1 cm)
Depth	4.80 in (12.2 cm)
Weight	0.75 lb (0.34 kg)

Power

Input Power	12V DC 2A
Power Supply	100-240V AC 0.6A 50/60Hz
Maximum Power	24 Watts

Compliance

Safety and Emissions	FCC Part 15 CE Mark C-Tick
RoHS	Compliant

Enclosure

Metal enclosure

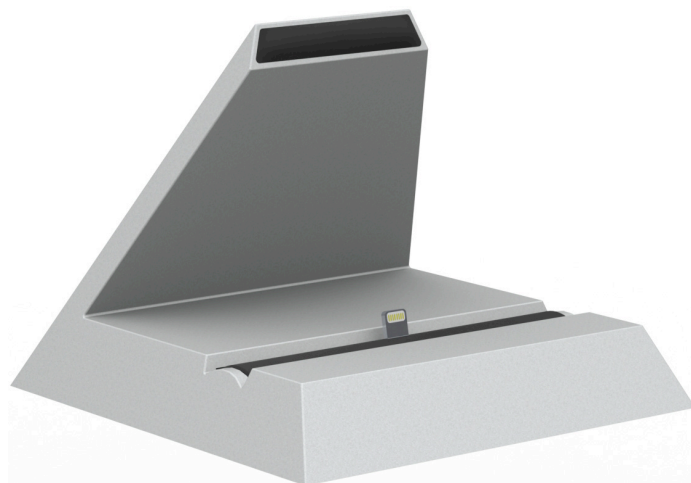
Installation

To complete dock setup, connect the 12V 2A 24W power supply to the back of the DCD-A00L.

Note: Power cord prongs need to be configured for specific country specifications.

⚠ SURGE PROTECTION: Use a surge-protected circuit for all components requiring 100-240V AC, 50/60 Hz source power.

⚠ ELECTRICAL DISCONNECT: The 100-240V AC, 50/60 Hz source power outlet and input power sockets should be easily accessible in the event of an electrical hazard or malfunction condition.



Front View



Rear View

Made for

iPod iPhone iPad